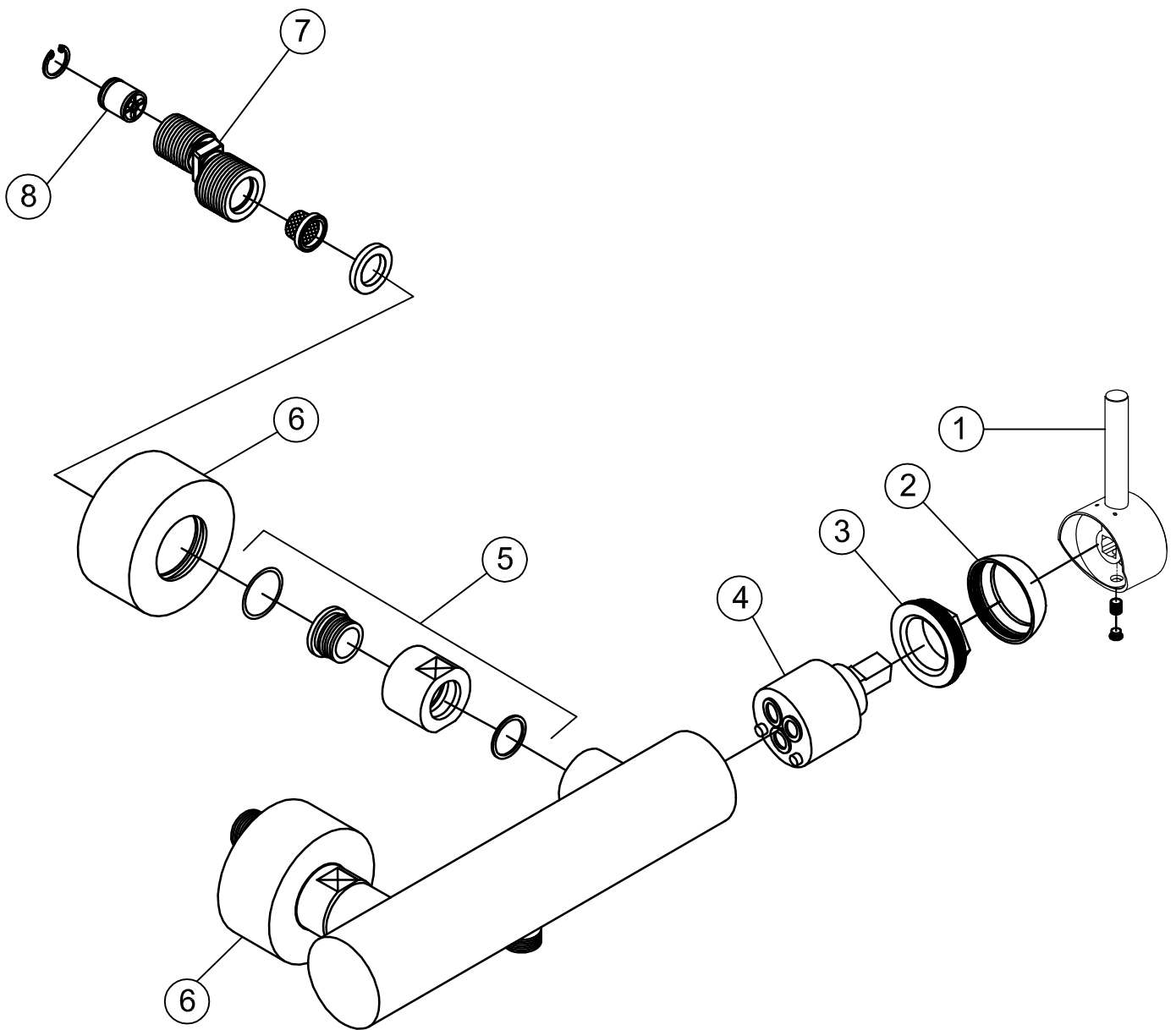



100 1220

STEINBERG





1	099 9913	Griff komplett handle complete	100 1220
2	099 8013	Kugelkappe, chrom spherical cap chrome	
3	099 8012	Überwurfmutter Kartuschebefestigung 40 mm union nut for cartridge fixing set (40 mm)	
4	099 9020 1	Keramik-Kartusche Ø 40 mm "Kerox" ceramic cartridge 40 mm "Kerox"	01.08.2016
5	099 1200	Überwurfmutterkomponenten Ü 3/4" (2-Set) hexagonnut spare parts components (2x sets)	
6	099 9877	AP- Rosetten Ø 68mm (Paar) rosettes for exposed mixers Ø 68 mm (pair)	STEINBERG 
7	099 9891	S-Anschluss S-copnnection	
8	099 9160	Rückflussverhinderer Ø 14 mm back flow preventer Ø14 mm	

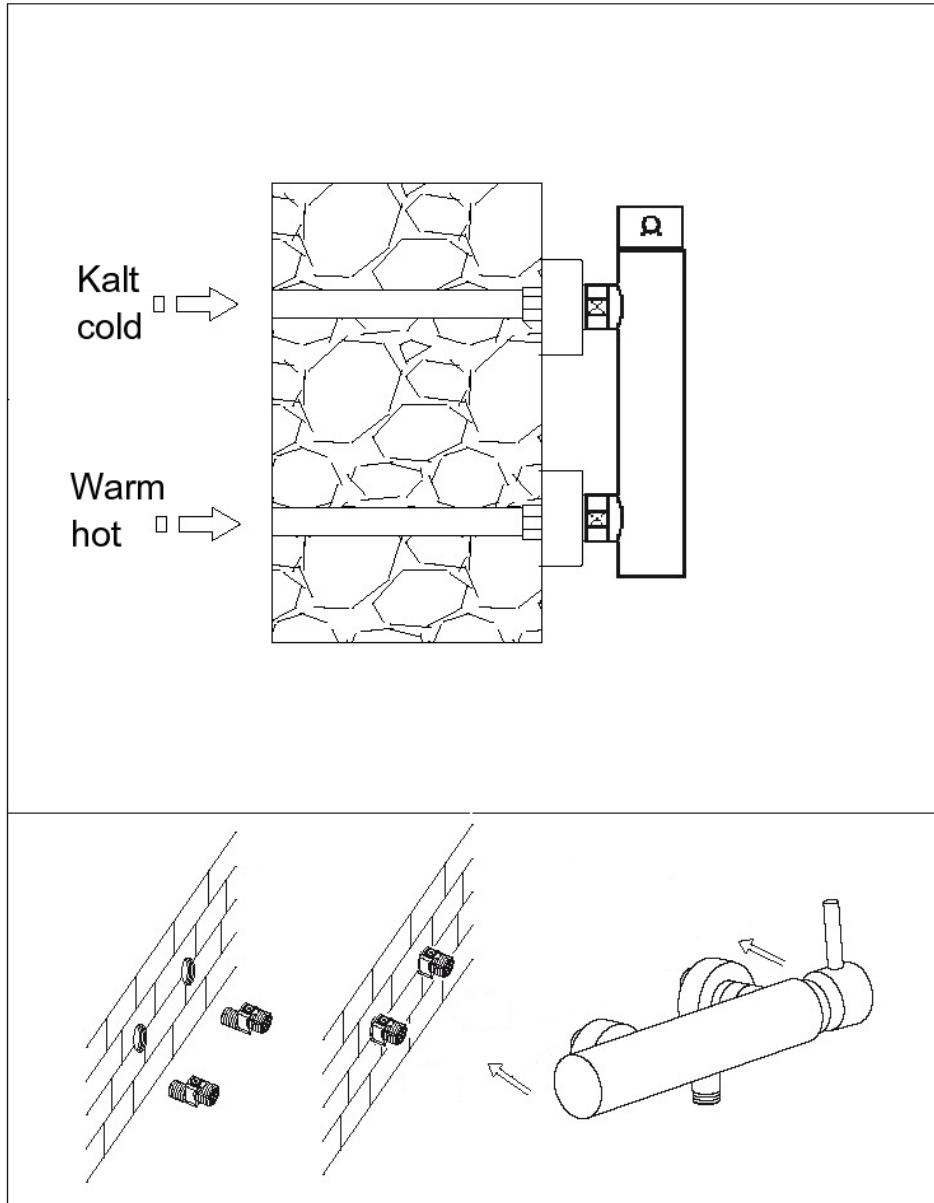
STEINBERG



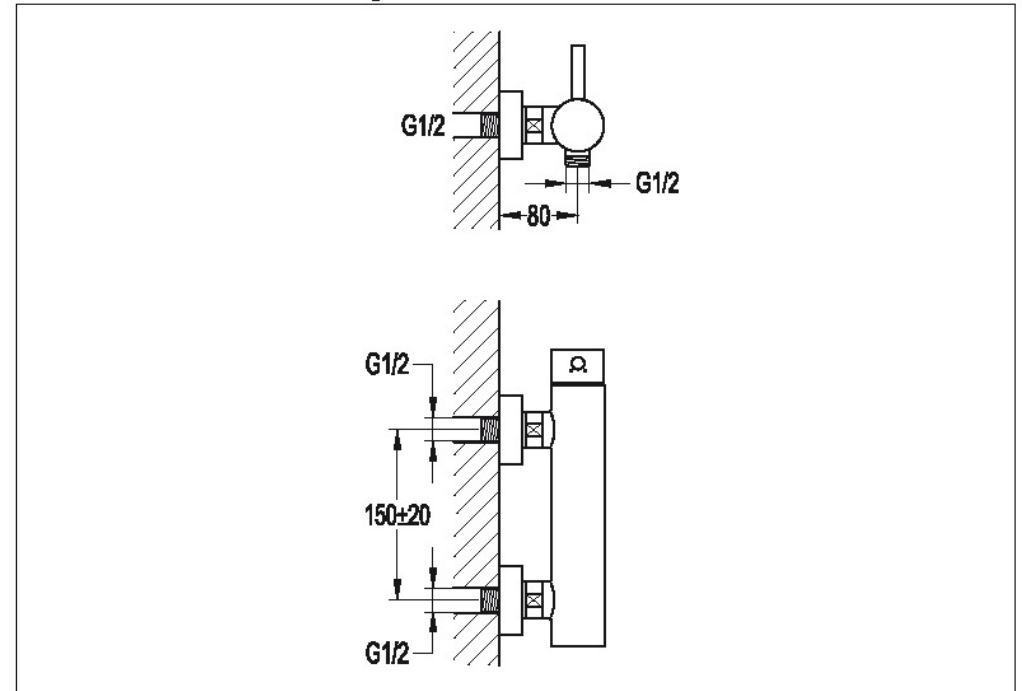
Brause-Einhelelmischbatterie 1/2"

Art.Nr.100 1220

Installation



Technische Zeichnung



Explosionszeichnung

